

Birth Practices in Ile-de-France: a website for future parents

<https://accouchements.sante-idf.fr>

C. Crenn Hebert

ORAHS 2021



Authors

C. Crenn Hebert ^{a b d} , C. Menguy ^b ,
L. Anzelin ^c , J. Da Costa ^c , M. Hanf ^c ,
M. Martinowsky ^d , F. Artzner ^e

^a Maternity dept, **University hospital** Louis
Mourier, Assistance Publique Hôpitaux de Paris,

^b **Perinat-ARS-IDF**, Paris, France,

^c **SESAN**, Paris, France ,

^d **ARS Ile de France**,

^e **CIANE**, patient representative association

Outline

Background

Objectives

Methods

Results

Discussion- Conclusion

Background - Worldwide



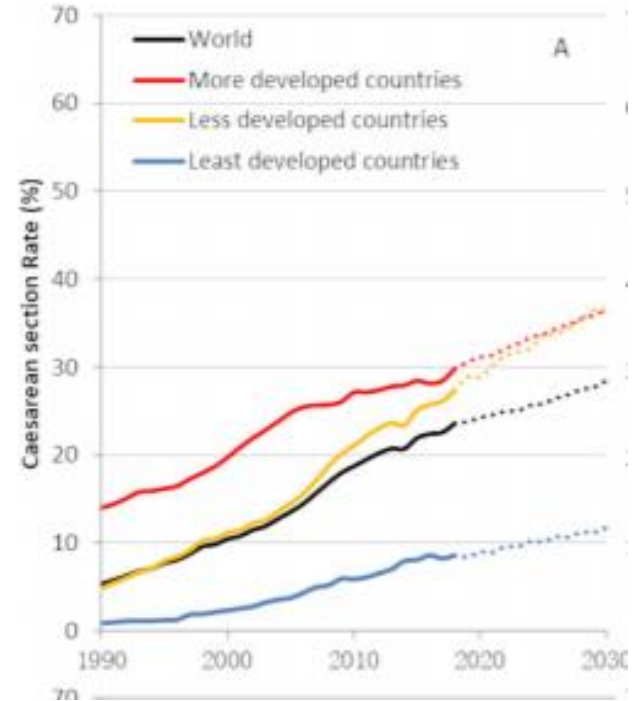
June 2021:

Quality, women-centred care needed
to address high use of caesarean section

“It’s important for all women to be able to talk to
healthcare providers and **be part of the decision
making on their birth, receiving adequate
information including the risks and benefits...**”

Dr Ana Pilar Betran, Medical Officer at WHO and HRP.

<https://gh.bmj.com/content/6/6/e005671>

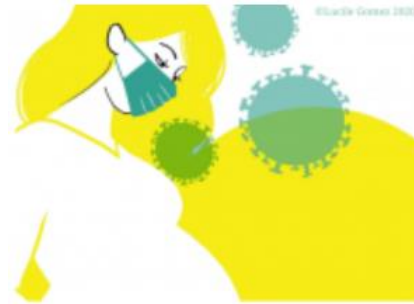


Background - France

2017 : Childbirth: the words of women about “obstetrical violences” ... (*Le Monde*)



July 2020: « obstetrical violences » intensification during pandemic ?(@TCVOG)



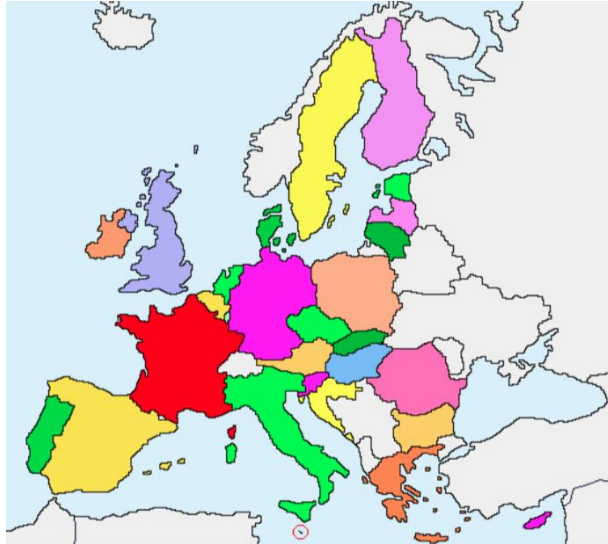
Background- *Ile de France*

1. **Perinat-ARS-IDF**: perinatal data are returned directly to willing practitioners and are published on a web-site page about obstetrical practices for professional evaluation since 2017
Regional quality action to address « Caesarean delivery practice heterogeneity, appropriateness and efficiency » (ORAHS 2019)

2. **Health literacy*** project from regional health authority

*the degree to which an individual has the capacity to obtain, communicate, process, and understand basic **health** information and services in order to make appropriate **health** decisions.“ cf <https://nnlm.gov/initiatives/topics/health-literacy>

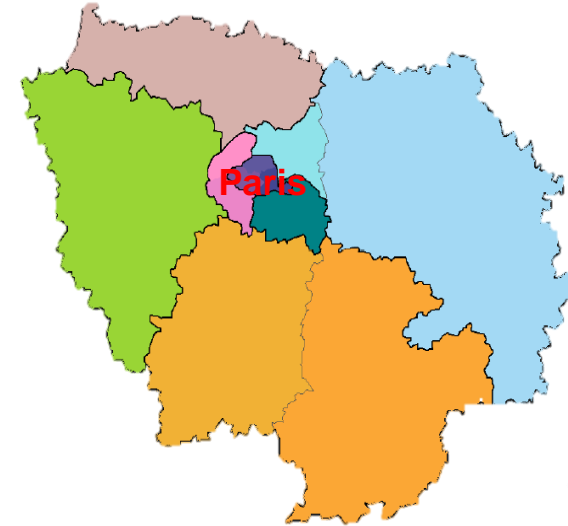
European Union



IDF Paris region



Metropolitan France
13 Regions
65 Million inhabitants
686 000 births



Paris-Ile de France Region
12 Million inhabitants (18%)
3 Million women 15-49 y old
168 000 births (24%)

Objectives of our work

Provide available data about childbirth, **easy to read** and **easy to understand**

To « **help women to be part of the decision making** on their birth »

To **help discussion** about childbirth with their perinatal health care provider.

Methods- 1

Working group

Midwife, obstetricians,
pediatricians,

Health literacy doctor

Medical information doctors

Patient representative

1/ Select birth practices indicators

among those already provided by regional
data scientists (SESAN, digital agency).

Data source: routine perinatal information
system (hospital discharge summary
ICD10 Diagnosis, surgical Procedures)

www.perinat-ars-idf.org

1.Explain each birth practice

2.Check for each explanation

with professional societies

and with parents

Methods- 2

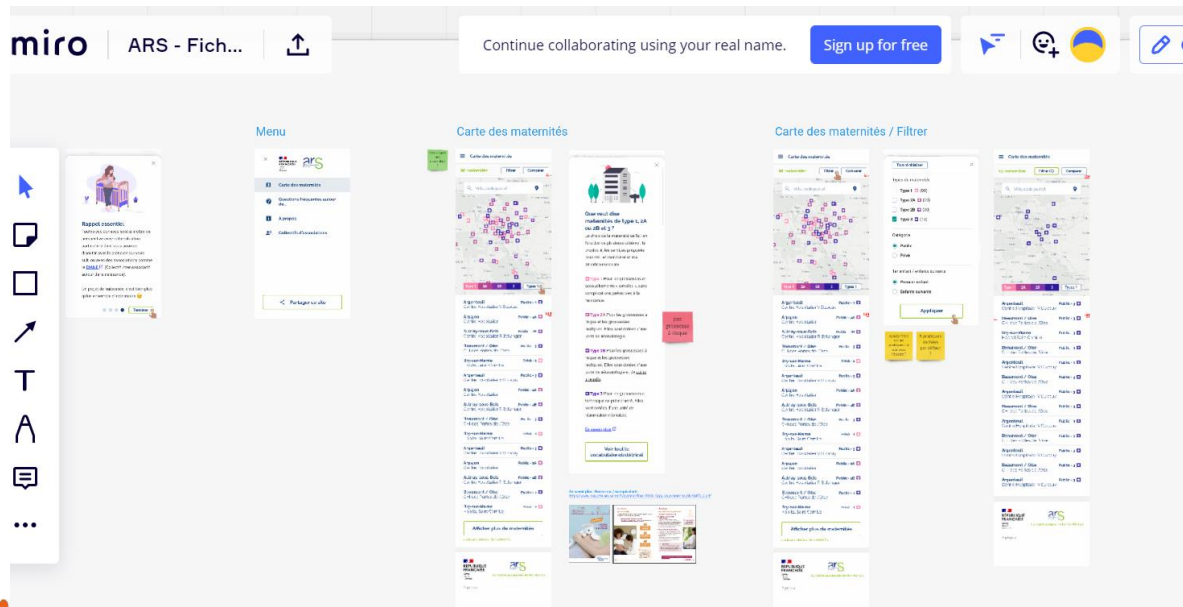
Working group :

2/ Select UX designer
(sept 2020)

<https://www.use.design/>

Virtual meetings animation
with Miro tool (online
whiteboard + brainstorming)

Model Tests with parents



Results

accouchements.sante-idf.fr



Get some statistics about
delivery practices

in Île-de-France and metropolitan France

In 2020

167 791
684 947

Registered deliveries in maternity

77.1 %
79.5 %

Vaginal delivery .

82.2 %
80.2 %

with epidural analgesia (of vaginal deliveries)

22.9 %
20.5 %

Caesarean section (1 of 5 deliveries)

201
711

Deliveries in midwife led birth center

Display maternities as you need

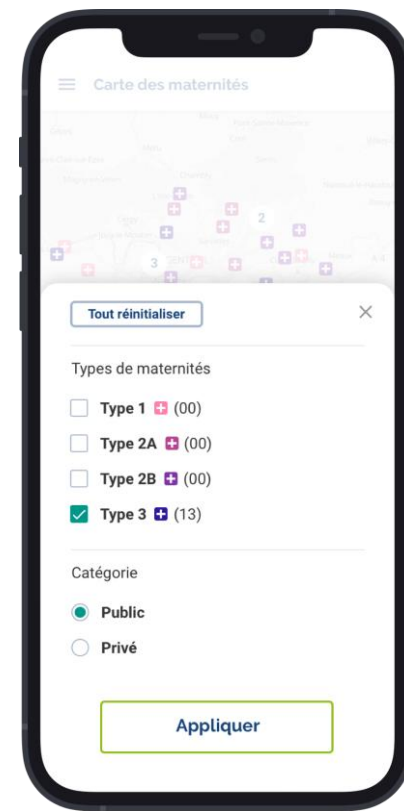
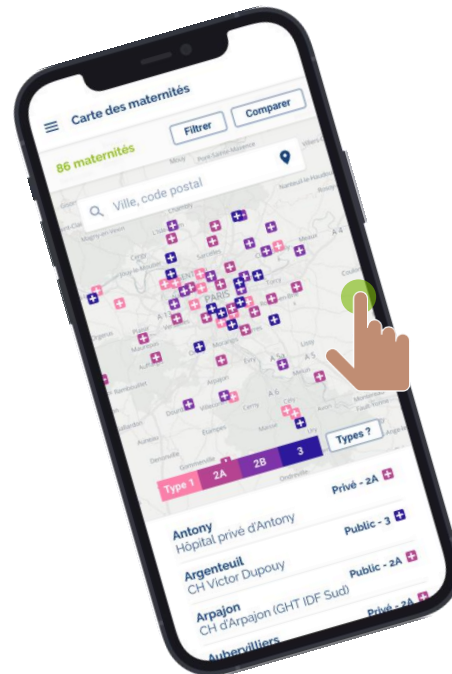
After geographical proximity, maternity choice will follow your **personal** (public or private?) and **medical situation** (type 1, ... 3, according to neonatal resources)

Learn

Episiotomy ? Primiparae ? Breech presentation?

Health professionals sometimes use technical vocabulary.

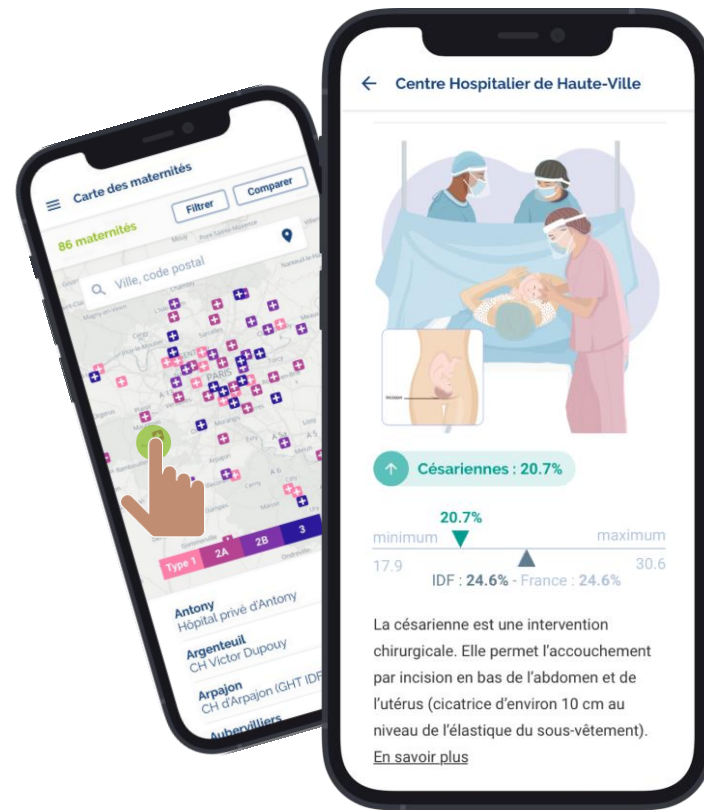
➡ In the menu Definitions section will clarify medical terms and answer to some of your questions.



Discover birth practices in your maternity

- How many women have **caesarean section** among total number of deliveries?
- How many **episiotomies** for the first baby and next ones?

 From interactive maternities map, select your choice and go to the specific informations





Médiane IDF des maternités de même type

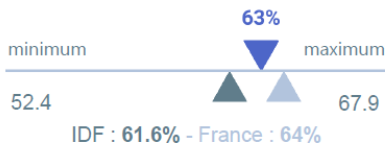


Médiane nationale des maternités de même type

Voies basses spontanées : 63%

Si premier enfant : 45.4%

Si enfant suivant : 73.9%



Voies basses assistées : 16.2%

(forceps, ventouses, spatules, manœuvres internes)

Si premier enfant : 27.9%

Si enfant suivant : 9%



Césariennes : 20.7%

Si premier enfant : 26.7%

Si enfant suivant : 17%

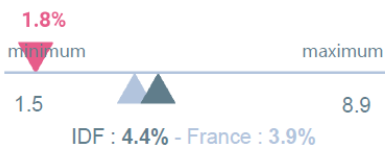


Épisiotomies : 1.8%

(des accouchements par voie basse spontanée)

Si premier enfant : 5.2%

Si enfant suivant : 0.5%

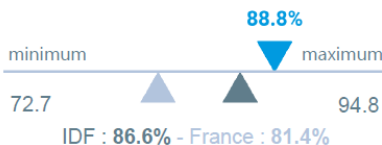


Péridurales : 88.8%

(des accouchements par voie basse)

Si premier enfant : 95.2%

Si enfant suivant : 85.2%



6.1% de césariennes programmées.

63.3% des césariennes programmées sont réalisées à partir de 8 mois et demi (pour une grossesse unique).

En cas de grossesse multiple, le taux de césarienne passe à 38%.

En cas de présentation du siège (pour une grossesse unique), le taux de césarienne passe à 58.8%.

En cas de cicatrice utérine (grossesse unique en présentation par la tête et naissance à terme), le taux de césarienne passe à 50.3%.

Maternité Louis Mourier (CHU) 3233 accouchements pour l'année 2020

Voies basses

Si premier enfant
Si enfant suivant

minimum

52.4

ID

Épisiotomie

(des accouchements)

Si premier enfant
Si enfant suivant

1.8%

minimum

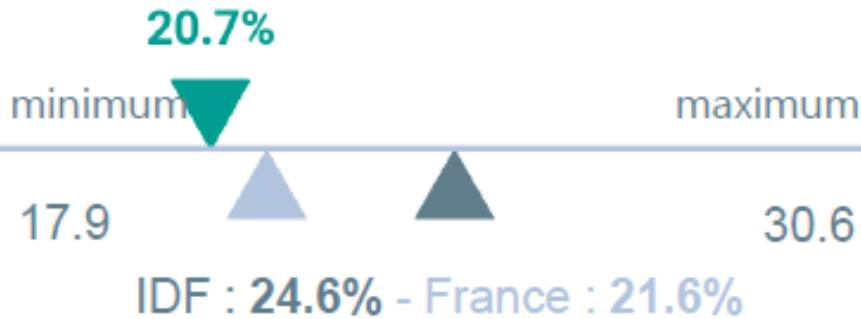
1.5

ID

Césariennes : 20.7%

Si premier enfant : 26.7%

Si enfant suivant : 17%



maximum

30.6

1.6%

ées.

mées sont
mi (pour

taux de

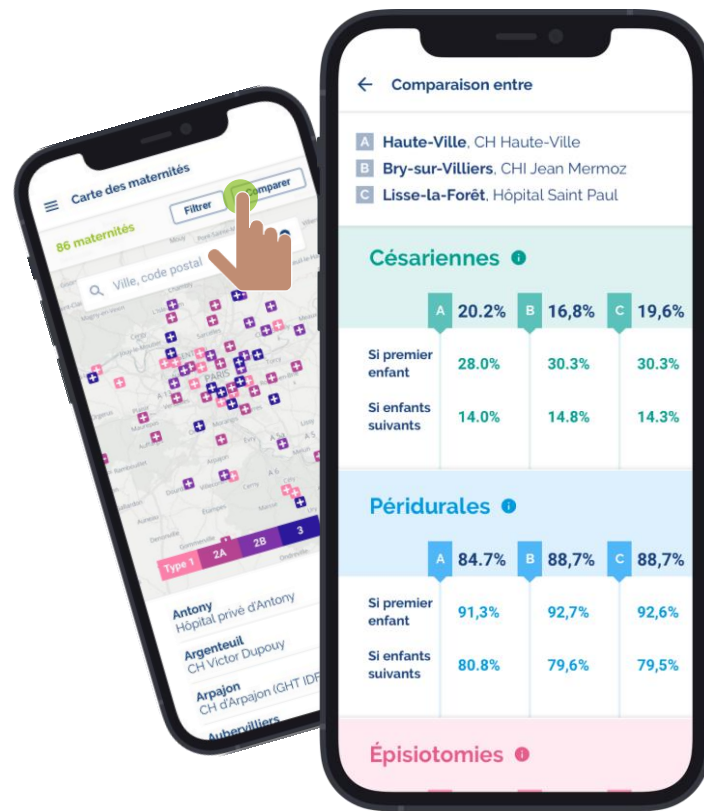
(pour une
arienne

iesse
te et
sarienne

Compare maternities indicators

Which differences about birth practices from one maternity to another?

➔ Select maternities and compare their indicators.



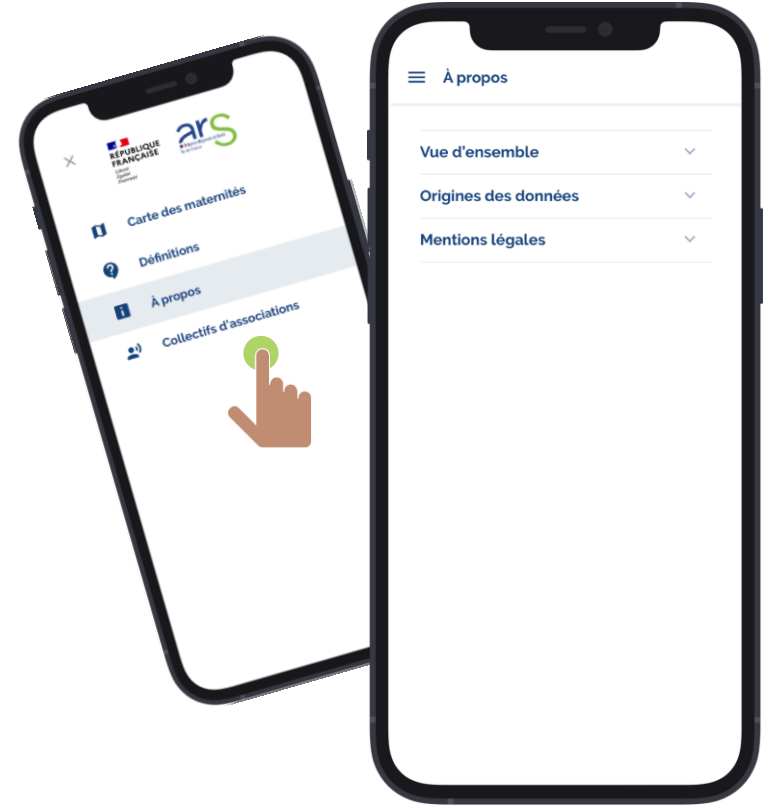
Transparency and full access to the data

Designed for parents first (or future parents), this website informs as well, **health care professionals, journalists or patient representatives...**

➔ Find in the menu the **A propos** section, where you will find data source and full download.

The website **won't be able to inform** about accommodation conditions, hospital stay duration, neither pregnancy follow-up...

Keep in your mind that all these data have to be seen in perspective with your own particular situation, about which you will be able to discuss with your practitioner or with some patient associations...



Discussion- Conclusion

Controversy on maternity comparisons:

- Some practioners / patient representatives
- Should we help to interpret « crude data » ?
- How to explain differences between maternities (without giving complete information about their different maternal resources)?

New Website is more attractive (for professionals as well as for parents)

Challenge is to keep on being accurate as much as possible

and to be really useful for parents in their discussions with practitioners...

A birth plan is much more than a set of indicators



Questions?

Rendez-vous on

accouchements.sante-idf.fr

